

Daily Program

THURSDAY, JUNE 23, 2005

MAASDAM



CANADA / NEW ENGLAND CRUISE
SUNRISE 5:31AM SUNSET 8:59PM

ARRIVAL: 8:00AM
ALL ABOARD: 3:30PM

Welcome to Halifax, Nova Scotia

DISSEMBARKATION TALK

Join your Cruise Director Craig this afternoon at 4:00pm in the Rembrandt Lounge for a short but informative briefing on your transition from ship to shore in Boston, tipping, and the Onboard Survey you will receive tomorrow. Immediately following will be a very special farewell from the Crew of the Maasdam, so bring your cameras! We kindly ask that at least one guest per stateroom attend this talk!

Nova Scotia's capital sits by one of the world's most extensive natural harbors, midway along Nova Scotia's south Atlantic shore. With a population of 114,000, Halifax is the largest Canadian city east of Montréal. Modern buildings nestle among Nova Scotian heritage, interspersed with numerous parks. The port is the busiest on Canada's east coast, partially because it's a year-round harbor — ice forces most others to close in winter. Over 16 million tons of cargo is handled from more than 2,400 vessels. Major industries are manufacturing, oil refining and food processing. Canada's largest naval base is here as well. Halifax was founded in 1749 as a British stronghold counterbalancing the French fort at Louisbourg on Nova Scotia's far eastern tip. The historic waterfront district is a short and pleasant walk from the ship; and the famous star-shaped Citadel fort, although a more aggressive uphill climb, is also nearby. If you prefer to stay near the ship, the cruise ship terminal hosts a number of shopping booths boasting an array of "Haligonian" craftsmanship.

TONIGHT'S DRESS REQUEST

Formal

FROM THE NAVIGATOR

After departing from Sydney Harbour on a Northerly course, we dropped out pilot off and set a series of South to South-westerly courses that will take the Maasdam along the coast of Nova Scotia maintaining approximately 12 miles off the coast at all times. Halifax is one of the finest natural harbours in the world and one of the largest commercial ports in Canada. Over 16 million tons of cargo is handled from more than 2,400 vessels that call into this port each year. Arrival in Halifax will be 8:00am and all aboard will be 3:30 pm.

WEATHER FORCAST

68°F/20°C
Sunny

DON'T MISS

- Disembarkation Talk
- Crew Farewell
- Newlywed Game Show
- Showtime with the Maasdam Cast
- Dance Request Night



Music & Dancing

SEACREST plays your favorites
Crow's Nest, Sports Deck 12
5:00PM – 6:00PM (GUITARIST ANDREW)
7:15PM – 8:15PM
9:15PM – 12:00MN

dance to night time nostalgia with
NEVADA
Ocean Bar, Upper Promenade Deck 8
5:00PM – 6:00PM
7:15PM – 8:15PM
9:15PM – 12:00MN

pianist BILL FORREST
Piano Bar, Upper Promenade Deck 8
7:15PM – 8:15PM
9:15PM – CLOSE
9:45PM – BEATLES HOUR

THE CHAMPAGNE STRINGS
play light classical favorites
Explorers Lounge,
Upper Promenade Deck 8 starboard
9:15PM – 12:00MN

DJ CANDISSE spins the discs
Crow's Nest, Sports Deck 12
12:00MN – CLOSE

COCKTAIL OF THE DAY
Snowy Summer ♦ \$4.25
A mixture of rum, pineapple and
coconut liqueur.

MARTINI OF THE DAY
Gimlet – Super Lime Martini ♦ \$4.25
Vodka or Gin & lemon sour mix

Showtime

REMBRANDT LOUNGE, DECK 7

Cruise Director Craig Di Rocco
proudly presents

Party Gras!

A Jet-Setting musical celebration!

8:30PM Early Seating
10:15PM Main Seating

Please no Audio/video recording flash
photography or saving of seats

Movie

WAJANG THEATER
PROMENADE DECK 7

2:00pm, 5:45pm, 8:00pm &
10:15pm

HOTEL RWANDA

Don Cheadle & Joaquin Phoenix
2 Hours and 1 minute
Rated PG-13

Complimentary popcorn is served
before each feature presentation.

PORT & STARBOARD

In the early days of sailing, some vessels had a rudder, or steering board on the right side of the ship, which became known as the steering board side, eventually abbreviated to starboard side. When these vessels came into harbor, it was safer to berth with the left side of the ship against the pier, thus avoiding damage to the rudder. The left side of the ship became known as the port side.

SWIMMING POOLS

We ask that guests refrain from allowing their children to use the swimming pools while wearing diapers as this is against United States Public Health policy. We also ask that guests do not carry drinks while in the pool or Jacuzzi for safety reasons. We thank everyone for your co-operation in this matter for everybody's safety!

DINNER SEATINGS

To enhance your dining experience this evening there will be two dinner seatings in the Rotterdam Dining Room. Early Seating guests will dine at 6:00pm and Main Seating guests will dine at 8:15pm.

MR & MS MAASDAM

Don't forget to be on the lookout for Mr. and Ms. Maasdam. You could be standing next to them at this very minute so ask as many guests as possible. Mr. and Ms. Maasdam will be revealed at the end of the cruise as well as the finders who will receive a load of ship's prizes.

NEWLYWED GAME SHOW

Find out just how well couples know each other in the hilarious Newlywed/Not-So-Newlywed Game. 7:45pm Rembrandt Lounge.

WIN A CRUISE LOTTERY

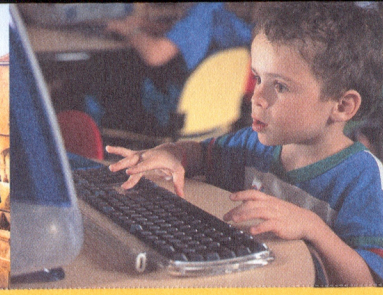
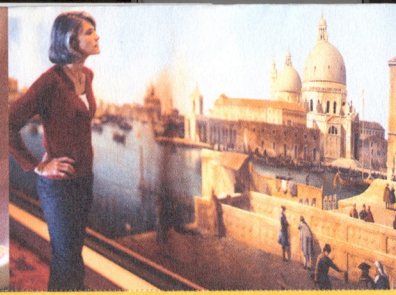
Don't forget to buy your Win A Cruise Lottery tickets, your chance to win a 7 day Caribbean cruise for two! There are **only 13 tickets sold** so far so your chances are great. Get yours from the Front Office. Tickets are 1 for \$10 or 3 for \$20.

FLAGS

Ships used colored flags specified by the International Flag Code, which allow a ship of any nationality to communicate with one another. There are 36 flags, one for each letter of the alphabet and the numbers 0-9. There are also three special flags which, when used mean the duplication of the preceding letter or number, and one answering pennant. Each flag has an individual meaning. For instance, the flag corresponding with the letter "H" (half red/half white) indicates that the pilot is onboard. Flags dressing the ship in port are arranged so that no message has been spelled out.

SHOWTIME BINGO

Win big bingo bucks before showtime! This Bingo session is open to both seatings so feel free to join in and for your chance to win some big money at bingo! Your Bingo Boy Troy will also be there selling Win A Cruise lottery tickets, don't miss your chance to win a 7 day Caribbean cruise for two! 10:00pm, Rembrandt Lounge, 7.



Food

LIDO RESTAURANT, DECK 11

Continental Breakfast
6:00am – 10:30 am

Breakfast Buffet
6:30am – 10:00am

Stirfry Bar
11:30am – 2:00pm

Indonesian Lunch Buffet
11:30am – 2:00pm

Deli, Pizza & Salad Bar
11:30am – 5:00pm

Ice Cream Parlor
11:30am – 5:00pm
6:00pm – 8:00pm
10:30pm – 12:00mn

Casual Dinner
6:00pm – 7:30pm

French Late Night Snack
11:00pm – 12:00mn

**TERRACE GRILL,
LIDO POOLSIDE, DECK 11**
Hamburgers, Hot Dogs &
Taco Bar 11:30am – 5:00pm

ROTTERDAM DINING ROOM

DECKS 7 & 8

Breakfast
8:00am – 9:30am

Lunch
closed

Early Seating Dinner, Upper Level
6:00pm

Early Seating Dinner, Lower Level
6:00pm

Main Seating Dinner, Upper Level
8:15pm

Main Seating Dinner, Lower Level
8:15pm

PINNACLE GRILL, DECK 8

Dinner
6:00pm - 9:30pm

Reservations are accepted 9:00am -
6:00pm by calling 98, or visit the
Pinnacle Grill Restaurant on Upper
Promenade Deck 8, starboard (cover
charge applies)

Drink

BARs & LOUNGES

JAVA CAFÉ 7
7:30am – 8:00pm

DOLPHIN BAR 11
10:00am – 12:00mn

OCEAN BAR 8
10:00am – 12:30am

CROW'S NEST 12
4:30pm – Close

CASINO BAR 8
4:30pm – Close

PIANO BAR 8
7:00pm – Close

EXPLORERS LOUNGE 8
8:00pm – 12:00mn

WINE DESK 11
11:30am – 2:00pm

The Wine Desk is also open in
the Rotterdam Dining Room
deck 8 from 5:00pm – 6:00pm.
There you can sample our
recommended wines for the
night. (\$1 sampling fee)

Services

BEAUTY/MASSAGE, 11
8:00am – 8:00pm

CASINO, 8
4:30pm – close

GUEST RELATIONS
MANAGER, 7
desk hours
9:00am – 11:00am
4:00pm – 6:00pm
also available via the
Front Office

INFIRMARY, 4
nurse on duty
8:00am – 12:00nn &
2:00pm – 6:00pm
doctor
8:00am – 9:00am &
5:00pm – 6:00pm

INTERNET CENTER, 8
open 24 hours
staffed:
8:00am – 10:00am,
4:00pm – 6:00pm &
7:00pm – 10:00pm

LIBRARY, 8
9:00am – 5:00pm

OCEAN SPA GYM, 11
6:00am – 9:00pm

PHOTO GALLERY, 7
5:00pm – 11:00pm

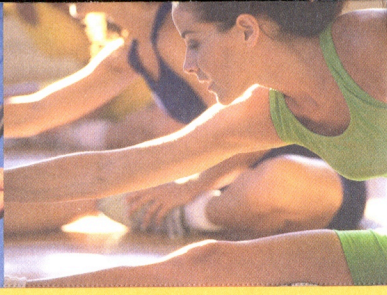
POOLS/JACUZZIS
deck 10 pool
7:00am – 7:00pm
deck 11 pool
7:00am – 7:00pm
deck 11 jacuzzi
9:00am – 7:00pm

PORT & SHOPPING, 7
7:00pm – 8:00pm

SAUNA & STEAM, 11
8:00am – 9:00pm

SHOPS ON BOARD, 8
4:30pm – 11:30pm

SHORE EXCURSIONS, 7
4:00pm – 6:00pm
Cancellation deadline for
Bar Harbor tours is
6:00pm tonight



DETACH →

Today at a Glance

morning/afternoon

- 7:30AM Walk-a-Mile Lower Promenade 6
- 8:00AM Step Class Ocean Spa 11
- 8:00AM The Maasdam docks in Halifax, Nova Scotia
- 9:00AM – 3:00PM Daily Quiz Library, Upper Promenade 8
- 9:00AM Pilates Class (\$11 fee) Ocean Spa 11
- 9:30AM – 12:00NN \$4.95 Bloody Mary Bar Dolphin Bar 11
- 9:30AM Hole In One Golf Atrium 6
- 10:00AM Cards & Games Players Meet (un-hosted) Card Room 8
- 10:30 AM Onboard Games: Catchphrase Ocean Bar 8
- 11:30AM Ping Pong Lido Poolside 11
- 1:15PM Onboard Games: Mad Gab Crow's Nest 12
- 2:00PM Cards & Games Players Meet (un-hosted) Card Room 8
- 2:00PM – 3:15PM Canadian Customs Tax Stamps Card Room 8
- 2:30PM Volleyball Serve Sports Deck 12
- 2:30PM – 6:00PM Basketball, tennis & volleyball are available Sports Deck 12
- 3:15PM Team Trivia Crow's Nest 12
- 3:30PM Friends of Bill W. Piano Bar 8
- 3:30PM – 4:00PM Tea Time Explorers Lounge 8
- 3:30PM All Aboard! The gangway is raised
- 4:00PM Yoga Class (\$11 fee) Ocean Spa 11

Thursday, June 23, 2005

afternoon/evening

- 4:00PM Disembarkation Talk and Crew Farewell Rembrandt Lounge 7
- 5:00PM Aerobics Class Ocean Spa 11
- 5:00PM Catholic Mass Wajang Theatre 7
- 5:30PM Tara Vanessa Cocktail Ring Sale Jewelry Shop 8
- 5:30PM Costume Jewelry Day Jewelry Shop 8
- 6:15PM Grand Finale Art Auction Preview Card Room 8
- 6:45PM Grand Finale Art Auction Card Room 8
- 7:45PM Newlywed Not So Newlywed Game Rembrandt Lounge 7
- 8:30PM Showtime, Early Seating Rembrandt Lounge 7
- 9:00PM – 12:00MN Cigars Under The Stars Navigation Aft 10
- 9:45PM Beatles Hour with Bill Piano Bar 8
- 9:45PM Evening Team Trivia Card Room 8
- 9:45PM Express Evening Formal Bingo Cards on Sale Rembrandt Lounge 7 & 8
- 10:00PM Express Evening Formal Bingo Rembrandt Lounge 7 & 8
- 10:15PM Showtime, Main Seating Rembrandt Lounge 7
- 11:15PM Dance Request Night Crow's Nest 12
- 12:00MN DJ Candisse Spins the Hits Crow's Nest 12